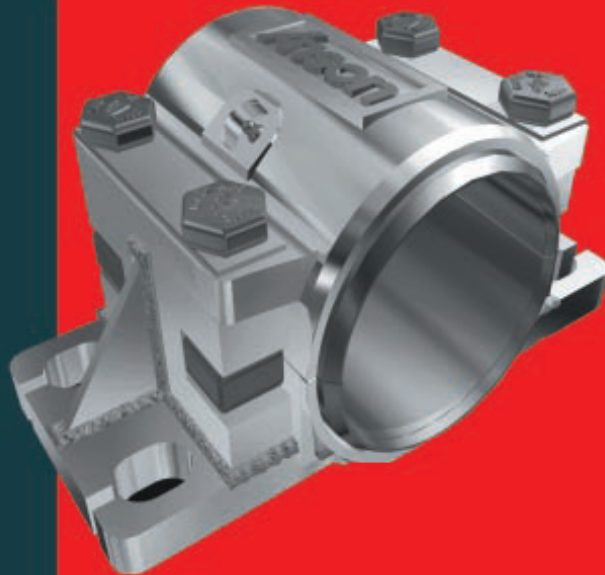
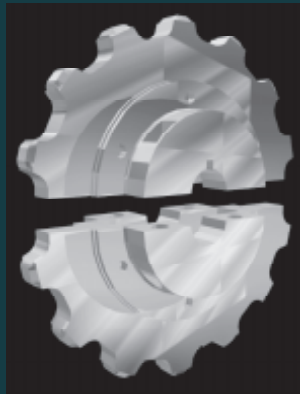


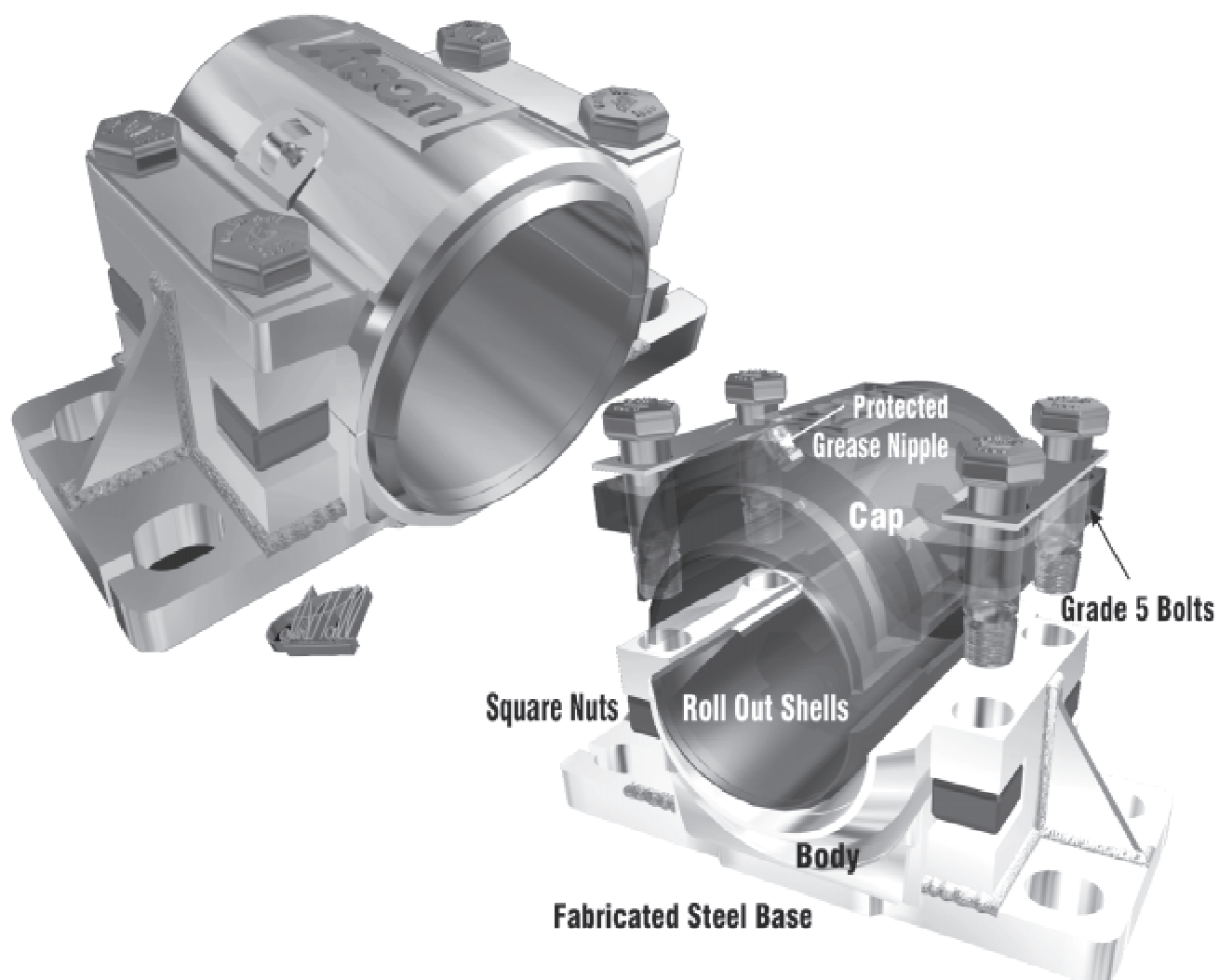
Anson



C
A
T
A
L
O
G
U
E

All Products Proudly Manufactured in Canada at:

7392 Progress Place
Delta, British Columbia, CANADA V4G 1A1
Tel: (604) 952-4055 Toll Free: 1-800-663-7723
Email: info@ansonindustrial.com
www.ansonindustrial.com



The ORIGINAL 2500 Series Bearings

These bearings are designed to facilitate the removal and replacement of the bearing element without disturbing the shaft alignment. After removing the caps and lifting the shaft $\frac{1}{4}$ " the bottom inserts can be replaced, the shaft dropped back into place and the new caps bolted down. The bearing elements are available in Babbitt Urethane, Zinc Aluminum and Bronze Bushed, and are interchangeable. Grade 5 bolts are used, and are prevented from turning loose by the use of keeper plates under the bolt head. Square nuts are located in recesses and are locked in place. Grease fittings are at 45 degrees and are countersunk into cap to prevent damage. Overall dimensions are the same as the conventional 1400 series bearing with the possible exception of 5 7/16 & 6 7/16 sizes. Overall height of the 2500 series bearing is less than the standard split bearings, but still maintains the same base to center height as the 1400 series. All caps have $\frac{1}{2}$ " deep gib. The bearings have ductile iron housings and fabricated steel bases. To insure rigidity, bases can be welded down after the shaft has been aligned and the bolts tightened down, thus eliminating the need for keeper bars. If feet are to be removed from the base, a saw should be used and not a torch.

Anson
Industrial Mfg. Corporation

7392 Progress Place
Delta, British Columbia, CANADA, V4G 1A1
Tel: [604] 952-4055 1- 800 663 7723
Fax: [604] 952-4058
Email: info@ansonindustrial.com
website: www.ansonindustrial.com

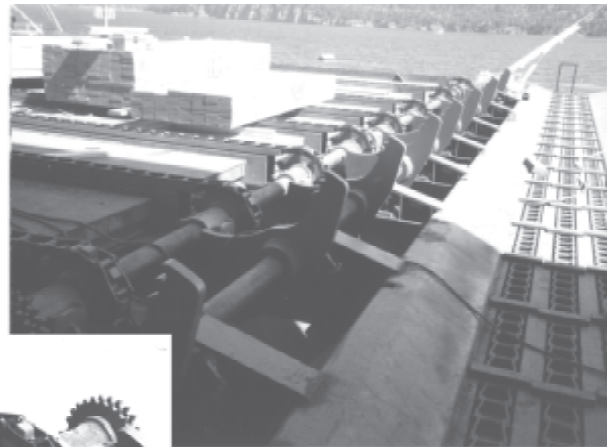
INTRODUCTION

Anson manufactures a range of high quality, rugged and practical items for the wood processing industry and other heavy industrial applications that require bearings and auxiliary parts, where the need is for durability, ease of maintenance and simple installation.

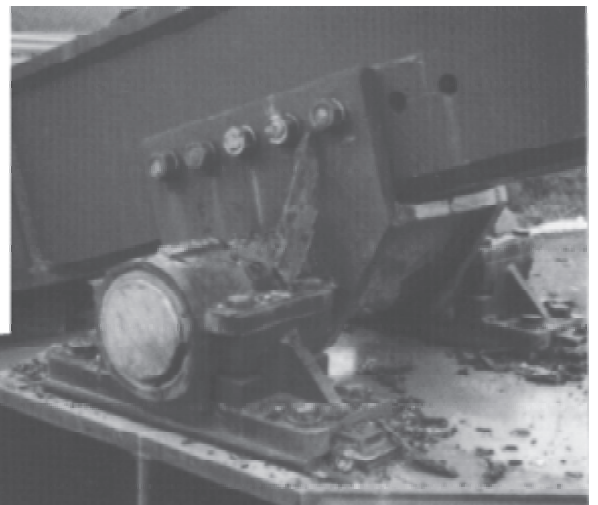
Formed in 1976, Anson has been very successful in developing ranges of bearings, take-up frames and sprockets that each have a high degree of innovation, designed for easy installation, service and replacement.

Anson bearings are available with a full range of easy- replacement linings, making them the best choice for hard-to-reach and for heavy-duty applications.

Now with products around the world, Anson has grown from its strengths which include high quality and durability of products, speedy delivery to clients, fast parts service for inventories based on just-in-time protocols and a custom bearing design or modified product service for tricky installations.



Call Anson for bearing, sprocket and take-up frame requirements.



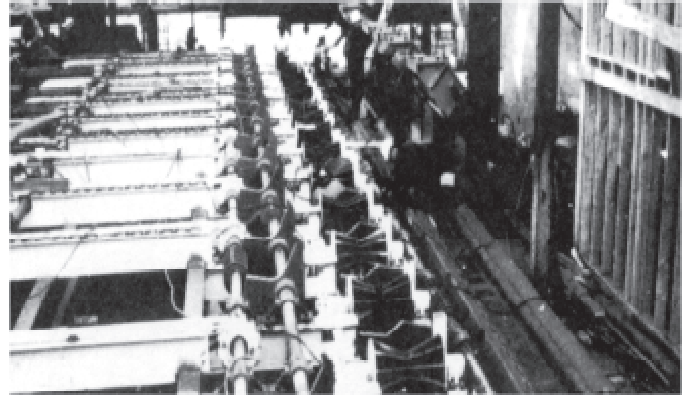
**Rough Service,
Heavy Duty!**

Anson 2500 Series Bearings

Having bearing problems? Anson Sales of Delta, British Columbia thinks it has the answer to some of those problems. Anson's 2500 Series unit has a horizontal split with a gib. It is a three-part bearing and can be supplied with babbitt, polyurethane or zinc aluminum lining. The zinc aluminum lining is being used in place of SAE 660 bronze, giving a similar service life as bronze at a much reduced cost, according to Anson. The zinc aluminum is poured "in house," thus ensuring fast service.

The most popular lining used in the Anson bearing is the polyurethane, which has an excellent "memory" and readily absorbs impact and shock loading, says Anson. The unit utilizes a split ductile iron housing and fabricated steel base.

Glenn Cole, maintenance supervisor, Weyerhaeuser, Wright City, Oklahoma says, "We are using them at the merchandizer log decks, hourglass rolls and stop'n loads with no signs of wear after a year of service. The urethane used contains 2% moly and graphite and can be used on shafts up to 80 RPM without lubrication. However, lubrication is recommended to ensure maximum life, which may be shortened by dust and grit."



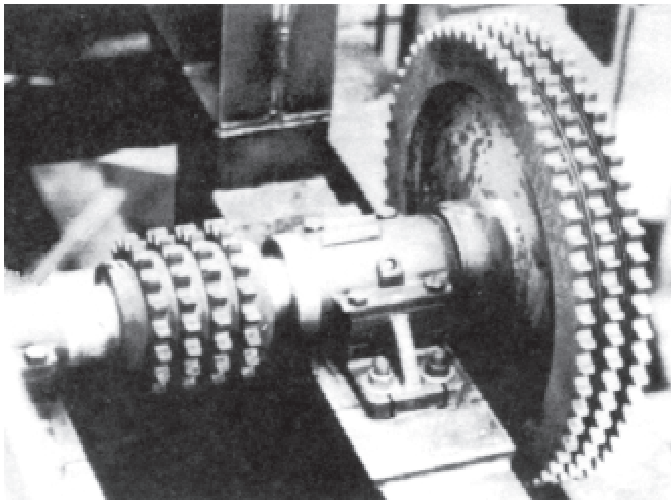
Anson's revolutionary roll-out shell design offers the user the quickest and simplest bearing replacement in the market today. The four bolts on the cap portion are removed and the cap pops off; remove two keys and the old roll-out shell; roll the new shell in and replace the keys and cap. The entire replacement is accomplished without disturbing the shaft assembly and alignment.

They'll also interchange with regular bearings of the same dimensions, and can be welded down where there is lots of vibration.

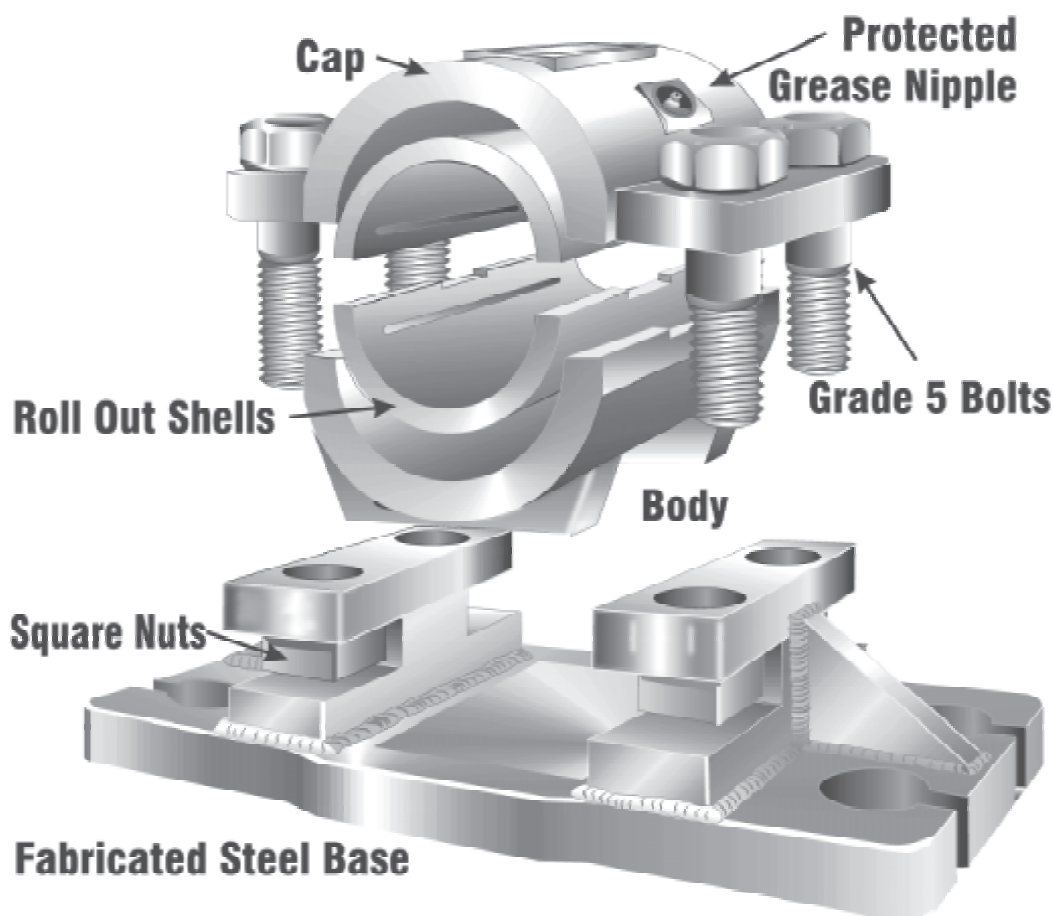
Ken Porter, Boise Cascade, Mount St. Helen's, Oregon, says Boise uses Anson's 2500 Series urethane bearings in hourglass rolls, drag conveyors, log hauls and log kickers. They are mounted horizontally or vertically.

"We weld the base in place after alignment and don't need to worry about bolts coming loose," Porter says. "As far as I am concerned, the Anson bearing is the best thing to come along in the industry for a long time. We won't look at another cast iron housing again."

Other Anson products are the 1000 Series, one-piece bearing block, and the ATU Series all steel fabricated conveyor take-up frames, 40 degree angle split bearing and flange bearing with roll out shell.



2500 SERIES BEARINGS



These bearings are designed to facilitate the removal and replacement of the bearing element without disturbing the shaft alignment.

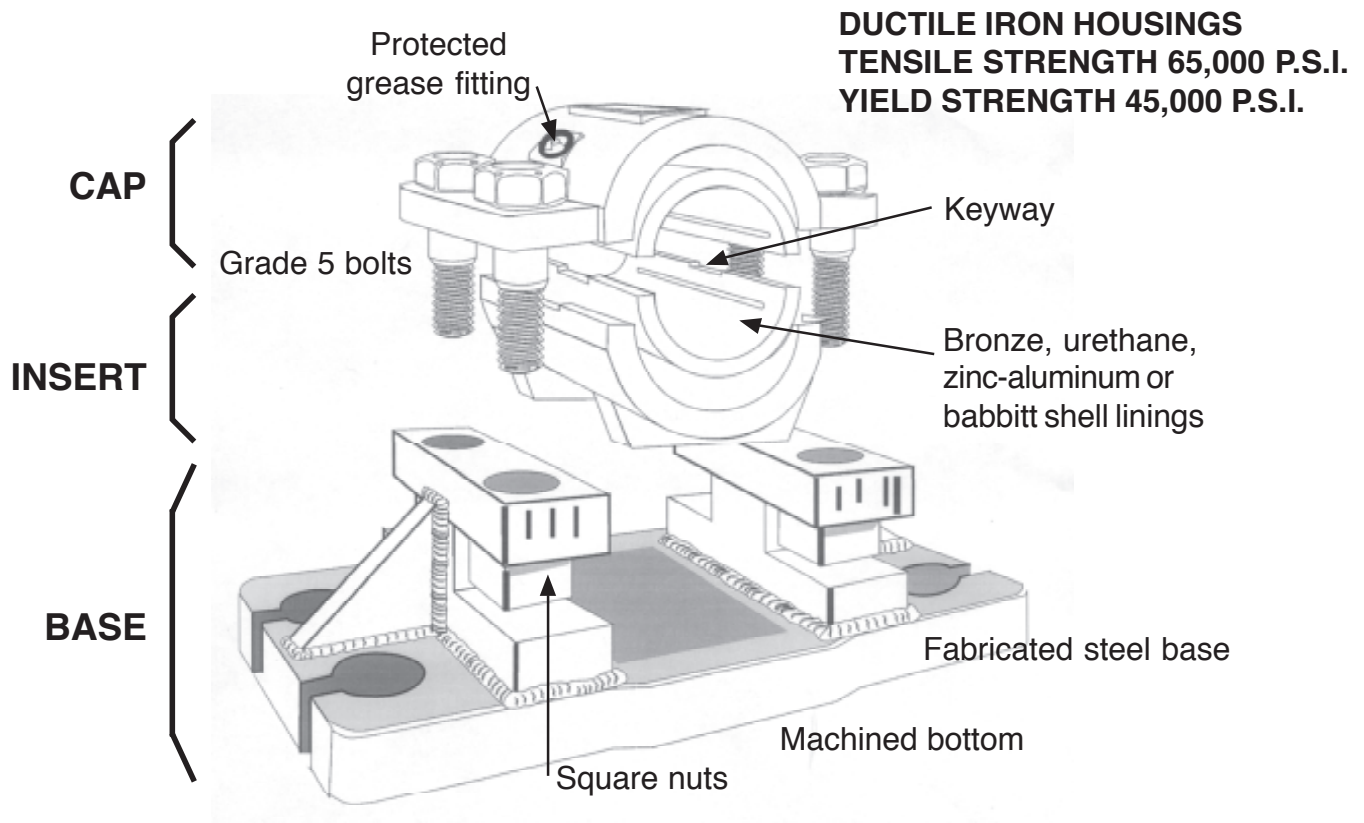
After removing the cap the bearing element can be replaced, and the cap bolted down.

The bearing elements are available in Babbitt Urethane, Zinc Aluminum and Bronze Bushed, and are interchangeable. Grade 5 bolts are used, and are prevented from turning loose by the use of keeper plates under the bolt head. Square nuts are located in recesses and are locked in place. Grease fittings are at 45 degrees and are countersunk into cap to prevent damage.

Overall dimensions are the same as the conventional 1500 series bearing with the possible exception of 5 7/16 & 6 7/16 sizes. Overall height of the 2500 series bearing is less than other standard split bearings, but the bearing still maintains the same base to center height as the 1500 series. All caps have 1/2" deep gib.

The bearings have ductile iron housings and fabricated steel bases. To ensure rigidity, bases can be welded down after the shaft has been aligned and the bolts tightened down, thus eliminating the need for keeper bars. **If feet are to be removed from the base, a saw should be used and not a torch.**

ANSON 2500 SERIES BEARINGS



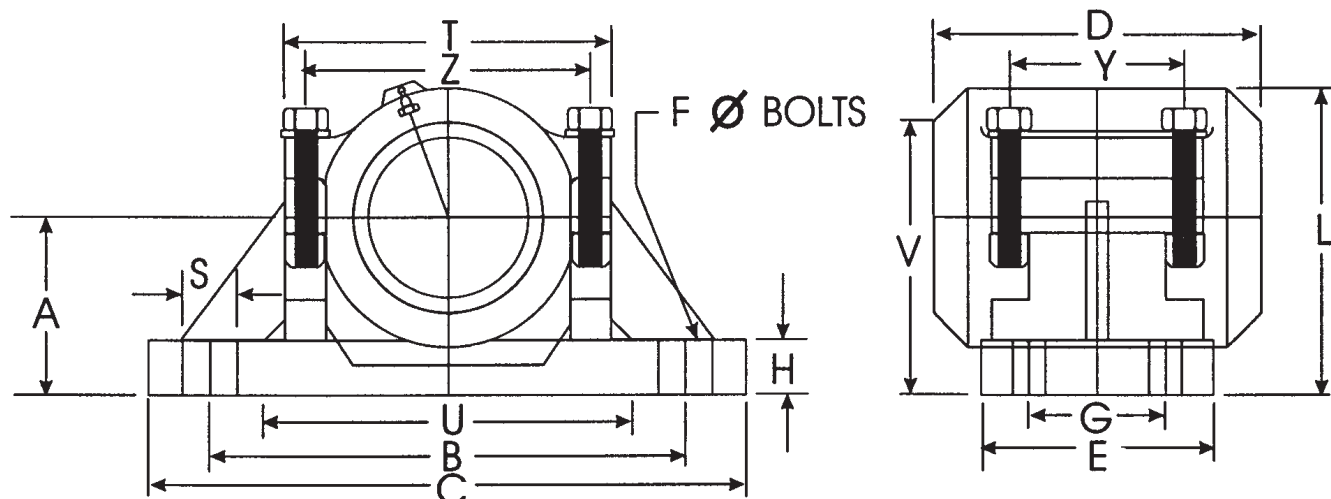
FEATURES

- *Fabricated Steel Base* - this becomes the permanent fixture onto which replacement cartridges are installed.
- *Ductile Iron Cap (top) and insert (bottom)* are available with fully interchangeable bushings made from: Babbitt, Urethane, Bronze or Za (zinc-aluminum).
- *When replacement is required, roll-out shells are provided for all bore sizes.*

APPLICATIONS

- *Log Decks, Log Stops and Unloaders, Hour-Glass Rolls, Kickers, Debarkers, etc.*
- *Low profile design allows bearings to be used and quickly serviced in difficult-to-reach locations.*
- *Urethane* - recommended for shock load applications - contains 2% molybdenum, allowing use on shafts running at up to 80 RPM without lubrication.
- *Za or Bronze* - recommended for heavy radial loads: note - Za has better wear resistant properties than type 660 Bronze at a much lower cost.
- *May be used in any application that calls for 1300, 1400 or 1500 series bearings (some dimensions may differ).*
- *Anson will custom manufacture bearings to suit your applications. Call 1-800-663-7723.*

2500 SERIES BEARINGS



2-2500 Series Bearings (4 Bolt)

BORE	A	B	C	D	E	F	G	H	L	S	T	U	V	Y	Z	WT
2 ⁷ / ₁₆	2 ³ / ₄	8	10 ¹ / ₄	5	3 ³ / ₄	⁵ / ₈	2	1	5	1	5 ⁵ / ₈	6 ¹ / ₄	4 ³ / ₈	2 ³ / ₄	4 ³ / ₄	25
2 ¹⁵ / ₁₆	3 ¹ / ₄	8 ³ / ₄	11	6	4 ¹ / ₄	⁵ / ₈	2 ¹ / ₂	1	5 ⁵ / ₈	1	6	6 ³ / ₄	5	3 ³ / ₁₆	5	35
3 ⁷ / ₁₆	3 ¹ / ₂	10 ¹ / ₂	13	7	4 ⁵ / ₈	³ / ₄	2 ³ / ₄	1	6 ³ / ₈	1 ¹ / ₄	7 ¹ / ₄	8	5 ¹ / ₄	3 ⁵ / ₈	6	46
3 ¹⁵ / ₁₆	3 ³ / ₄	12	14 ³ / ₄	8	5 ¹ / ₄	³ / ₄	3	1 ¹ / ₄	6 ⁷ / ₈	1 ³ / ₈	7 ⁵ / ₈	8 ¹ / ₄	5 ⁵ / ₈	4	6 ¹ / ₂	64
4 ⁷ / ₁₆	4 ¹ / ₈	13 ¹ / ₂	16 ¹ / ₂	9	6 ¹ / ₄	⁷ / ₈	3 ¹ / ₂	1 ¹ / ₄	7 ⁵ / ₈	1 ¹ / ₂	8 ⁷ / ₈	9 ⁵ / ₈	6	4 ⁷ / ₈	7 ¹ / ₂	90
4 ¹⁵ / ₁₆	4 ¹ / ₂	15	18	10	7	⁷ / ₈	4	1 ¹ / ₄	8 ¹ / ₂	1 ⁵ / ₈	9 ¹ / ₂	10 ³ / ₈	6 ¹ / ₂	5 ¹ / ₂	8	115
5 ⁷ / ₁₆	5 ¹ / ₂	16 ¹ / ₂	20 ¹ / ₂	12	8 ¹ / ₂	1 ¹ / ₈	5	1 ¹ / ₂	10	1 ⁷ / ₈	12	12 ³ / ₄	7 ⁵ / ₈	6 ³ / ₄	10 ¹ / ₈	200
5 ¹⁵ / ₁₆	5 ¹ / ₂	16 ¹ / ₂	20 ¹ / ₂	12	8 ¹ / ₂	1 ¹ / ₈	5	1 ¹ / ₂	10	1 ⁷ / ₈	12	12 ³ / ₄	7 ⁵ / ₈	6 ³ / ₄	10 ¹ / ₈	200
6 ⁷ / ₁₆	6 ¹ / ₂	19	23	14	10	1 ¹ / ₄	6	2	11 ¹ / ₂	2	14 ¹ / ₈	15	8 ³ / ₄	7 ⁵ / ₈	12	300
6 ¹⁵ / ₁₆	6 ¹ / ₂	19	23	14	10	1 ¹ / ₄	6	2	11 ¹ / ₂	2	14 ¹ / ₈	15	8 ³ / ₄	7 ⁵ / ₈	12	300
7 ⁷ / ₁₆	7	21 ¹ / ₂	26	16	11	1 ¹ / ₄	6 ³ / ₄	2	13	2 ¹ / ₄	17	18	9 ³ / ₄	8 ¹ / ₂	14 ³ / ₈	480
7 ¹⁵ / ₁₆	7	21 ¹ / ₂	26	16	11	1 ¹ / ₄	6 ³ / ₄	2	13	2 ¹ / ₄	17	18	9 ³ / ₄	8 ¹ / ₂	14 ³ / ₈	480
8	7	21 ¹ / ₂	26	16	11	1 ¹ / ₄	6 ³ / ₄	2	13	2 ¹ / ₄	17	18	9 ³ / ₄	8 ¹ / ₂	14 ³ / ₈	480

2500 Series Bearings (2 Bolt)

BORE	A	B	C	D	E	F	G	H	L	S	T	U	V	Y	Z	WT
2 ⁷ / ₁₆	2 ³ / ₄	8	10 ¹ / ₄	5	3 ³ / ₄	³ / ₄	n/a	1	5	1 ¹ / ₈	5 ⁵ / ₈	6 ¹ / ₄	4 ³ / ₈	2 ³ / ₄	4 ³ / ₄	25
2 ¹⁵ / ₁₆	3 ¹ / ₄	9 ¹ / ₂	12 ¹ / ₄	6	4 ¹ / ₄	⁷ / ₈	n/a	1	5 ⁵ / ₈	1 ³ / ₈	6	6 ³ / ₄	5	3 ³ / ₁₆	5	35

All sizes equipped with roll out liners.

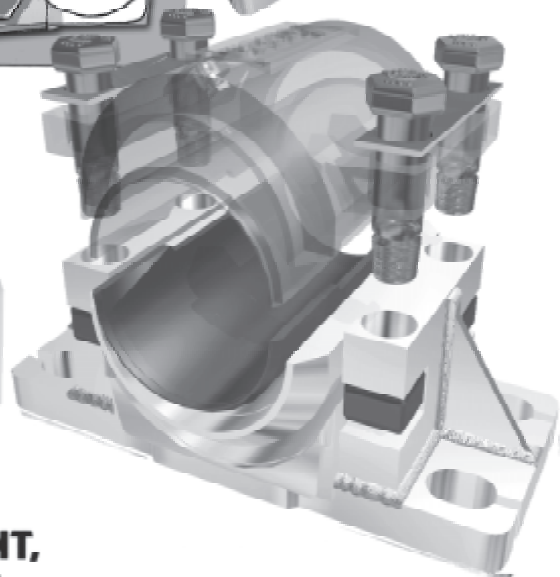
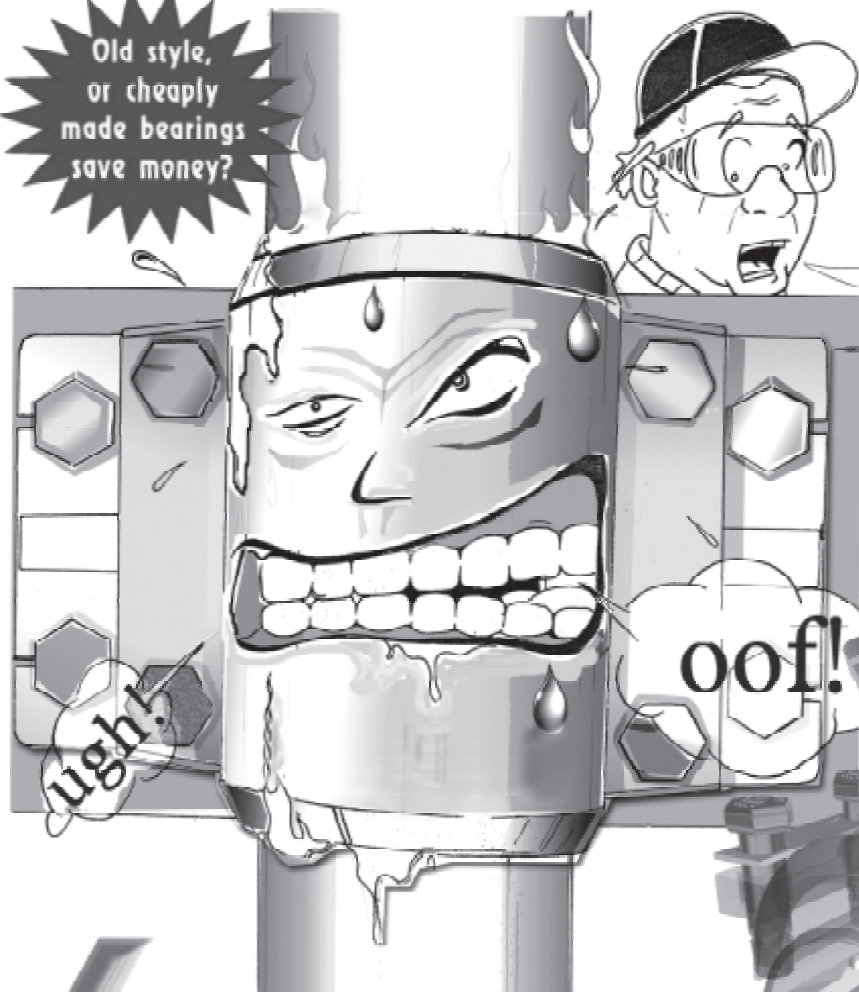
AVAILABLE IN BABBITT URETHANE, ZINC ALUMINUM & BRONZE BUSHED, ALL INTERCHANGEABLE.

Anson
Industrial Mfg. Corporation

7392 Progress Place
Delta, British Columbia, CANADA, V4G 1A1
Tel: [604] 952-4055 1- 800 663 7723
Fax: [604] 952-4058
Email: info@ansonindustrial.com
website: www.ansonindustrial.com

Old style,
or cheaply
made bearings
save money?

Quick! Call
ANSON!
Another generic
bearing has
given up!



Anson



**Angle
Bearings**

**THE ORIGINAL,
EASY SERVICE,
EASY PLACEMENT,
SUPER QUALITY,
LOW OPERATING COST,
MINING AND MILL MACHINE SHAFT BEARINGS**



Flange Bearings

1-800-663-7723

ANSON Industrial Manufacturing Corporation
7392 Progress Place

Delta, British Columbia, CANADA, V4G 1A1

Tel: [604] 952-4055: [604]952-4058

Full catalogue on the INTERNET at www.exmall.com\anson

ANSON BEARING LOAD RATING TABLES

These load rating tables apply when the following installation and operating conditions are met:

1. Maintain adequate grease lubrication.
2. Align bearings with shaft for uniform load distribution.
3. Normal running loads should not exceed ratings shown in load tables. Starting & occasional peak loads should not exceed ratings by more than 100%.
4. The journal shaft surface should be equal to that of commercial steel shafting (about 32 micro-inches) and the diameter within the tolerances of commercial steel shafting.
5. Ambient temperature should not exceed 225F. for babbitt, 300F, for bronze, 250F, for ZA and 225F, for urethane bushed bearings. If the shaft transmits heat from a source such as a oven, the shaft temperature at the bearing should not exceed these ambient temperatures.
6. Where thrust loads are present, install a bronze washer and fasten it in place with a set screw collar against end of bearing. The bearing ends are finished.

Radial Load Rating For Rigid Bronze or ZA12* Sleeve Bearings

Shaft Size	Shaft Speed, RPM (Load Rating In Lbs.)								
Inches	10	50	100	150	200	250	300	350	400
1 15/16, 2	1920	1880	1830	1790	1740	1690	1640	1590	1500
2 3/16, 2 1/4	2440	2390	2320	2240	2170	2100	2030	1960	1390
2 7/16, 2 1/2	3020	2940	2850	2750	2650	2560	2460	1860	1090
2 11/16, 2 3/4	3660	3560	3430	3300	3170	3040	2620	1580	545
2 15/16, 3	4370	4230	4060	3890	3720	3550	2440		
3 7/16, 3 1/2	5960	5740	5470	5200	4930	3610	1440		
3 15/16, 4	7790	7460	7060	6650	5910				
4 7/16, 4 1/2	9860	9400	8820	8240	5400				
4 15/16, 5	12180	11540	10740	9950	4090				
5 7/16, 5 1/2	14740	13880	12820	10340	1820				
5 15/16, 6	17530	16420	15040	9520					
6 7/16, 6 1/2	20560	19150	17390	7900					
6 15/16, 7	23840	22070	19870	5350					
7 7/16, 7 1/2	29170	26850	23950	1880					
7 15/16, 8	31090	28450	23410						

Load ratings are based on industry standards by Mechanical Power Transmission Association

ANSON BEARING LOAD RATING TABLES

Radial Load Rating For Rigid Babbitt Sleeve Bearings

Shaft Size	Shaft Speed, RPM (Load Rating In Lbs.)								
Inches	10	50	100	150	200	250	300	350	400
1 15/16, 2	1150	1110	1060	1010	965	915	865	815	730
2 3/16, 2 1/4	1460	1400	1330	1260	1190	1120	1050	975	410
2 7/16, 2 1/2	1800	1730	1630	1530	1430	1340	1240	645	
2 11/16, 2 3/4	2190	2080	1950	1820	1690	1560	1150	110	
2 15/16, 3	2600	2470	2300	2130	1960	1790	675		
3 7/16, 3 1/2	3550	3330	3060	2790	2520	1200			
3 15/16, 4	4640	4310	3910	3500	2760				
4 7/16, 4 1/2	5870	5410	4830	4250	1410				
4 15/16, 5	7240	6600	5810	5010					
5 7/16, 5 1/2	8750	7900	6840	4360					
5 15/16, 6	10410	9300	7910	2390					
6 7/16, 6 1/2	12200	10790	9020						
6 15/16, 7	14120	12360	10150						
7 7/16, 7 1/2	17270	14950	12050						
7 15/16, 8	18390	15750	10710						

Load ratings are based on industry standards by Mechanical Power Transmission Association

Radial Load Rating For Rigid Urethane Sleeve Bearings

Shaft Size	Shaft Speed, RPM (Load Rating In Lbs.)								
Inches	10	50	100	150	200	250	300	350	400
1 15/16, 2	920	890	850	810	770	730	690	650	580
2 3/16, 2 1/4	1170	1120	1060	1010	950	900	840	780	330
2 7/16, 2 1/2	1440	1380	1300	1220	1140	1070	990	520	
2 11/16, 2 3/4	1750	1660	1520	1460	1350	1250	920	90	
2 15/16, 3	2080	1980	1840	1700	1570	1430	540		
3 7/16, 3 1/2	2840	2660	2450	2230	2020	960			
3 15/16, 4	3710	3450	3130	2800	2210				
4 7/16, 4 1/2	4700	4330	3860	3400	1130				
4 15/16, 5	5790	5280	4650	4010					
5 7/16, 5 1/2	7000	6320	5470	3490					
5 15/16, 6	8330	7440	6330	1910					
6 7/16, 6 1/2	9670	8630	7220						
6 15/16, 7	11300	9890	8120						
7 7/16, 7 1/2	13820	11960	9640						
7 15/16, 8	14710	12600	8570						

ANSON 2500 SERIES BEARING

Over 100 mills across North America can attest to this innovative 3-piece split sleeve bearing.

Features include:

1. Babbitt, Urethane, Zinc Aluminum and Bronze Bushed castings are interchangeable.
2. Base made of fabricated steel and may be welded down to maintain shaft alignment. This becomes the permanent fixture onto which housings are installed.
3. Replacement of bearing cartridge consists of:
 - a) unbolt top cap of bearing
 - b) the bottom half (insert) can be replaced by jacking up shaft 1/4", push out bottom half, and replace with new insert. The drive chain and deck chains remain in place during the change. Alignment of the shaft is maintained throughout the replacement operation.
4. When shock loads are involved, as with stop unloaders, kickers & bumpers, urethane should be used because of its excellent memory. The urethane contains 2% moly and graphite, and can be used on shafts running up to 80 RPM without lubrication.
5. On heavy radial loads, Za or Bronze should be used (Za 12 wears better than 660 bronze at a reduced cost).
6. On Anson Bearings all that is required for replacement is a set of rollout shells.

The only bearing to use around log decks, log stops, hourglass rolls, kickers, etc. or wherever bearings are difficult to reach.

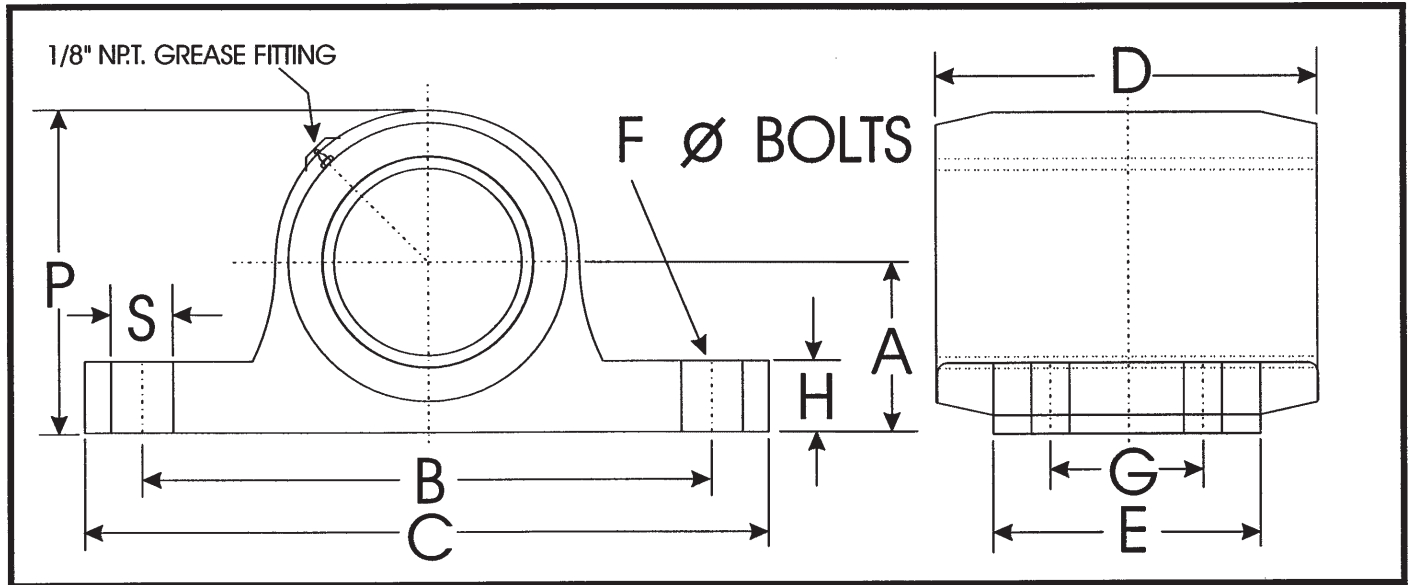
ANSON 1000 SERIES



Features:

- Housings are machined to accomodate precision bushings, which are installed with a press fit. Bearings are then drilled and tapped for a setscrew to ensure no radial or lateral movement of bushing material.
- Solid rigid ductile housing.
- Economical. Can be used in applications where access is not a problem or where cost does not warrant the use of the more expensive 2500 series.
- The bearing can be lined with babbitt, urethane, zinc aluminum or bronze bushings.
- Bushing material can be replaced with readily available stock.

ANSON 1000 SERIES BEARING



2-1000 Series 4 bolt base

SIZE	A	B	C	D	E	F	G	H	P	S	WT. (LBS)
2 ⁷ / ₁₆	2 ¹ / ₄	7	9 ¹ / ₄	5	4	⁵ / ₈	2	1 ¹ / ₈	4 ³ / ₈	1 ¹ / ₈	14
2 ¹⁵ / ₁₆	2 ¹ / ₂	8 ³ / ₄	11 ¹ / ₄	6	4 ¹ / ₂	⁵ / ₈	2 ¹ / ₂	1 ¹ / ₄	4 ⁷ / ₈	1 ¹ / ₈	24
3 ⁷ / ₁₆	3	10	12 ¹ / ₂	7	5	³ / ₄	2 ³ / ₄	1 ³ / ₈	6	1 ¹ / ₄	36
3 ¹⁵ / ₁₆	3 ¹ / ₄	11	13 ³ / ₄	8	5 ¹ / ₂	³ / ₄	3	1 ¹ / ₂	6 ¹ / ₂	1 ³ / ₈	51
4 ⁷ / ₁₆	4 ¹ / ₈	13 ¹ / ₂	16 ¹ / ₂	9	6 ¹ / ₄	⁷ / ₈	3 ¹ / ₂	1 ³ / ₄	7 ⁷ / ₈	1 ¹ / ₂	75
4 ¹⁵ / ₁₆	4 ¹ / ₂	15	18	10	7	⁷ / ₈	4	1 ⁷ / ₈	8 ¹ / ₂	1 ⁵ / ₈	100

1000 Series 2 hole base

SIZE	A	B	C	D	E	F	G	H	P	S	WT (LBS)
1 ¹⁵ / ₁₆	1 ³ / ₄	6	8	4	2 ³ / ₄	⁵ / ₈	n/a	⁷ / ₈	3 ¹ / ₂	1	8
2 ³ / ₁₆	2	6 ¹ / ₂	8 ¹ / ₂	4 ¹ / ₂	3	⁵ / ₈	n/a	1	3 ⁷ / ₈	1	11
2 ⁷ / ₁₆	2 ¹ / ₄	7	9 ¹ / ₄	5	3 ¹ / ₄	³ / ₄	n/a	1 ¹ / ₈	4 ³ / ₈	1 ¹ / ₈	14
2 ¹⁵ / ₁₆	2 ¹ / ₂	8 ¹ / ₂	11 ¹ / ₄	6	4	⁷ / ₈	n/a	1 ¹ / ₄	4 ⁷ / ₈	1 ³ / ₈	24

Available in Babbitt, Urethane & Bronze Bushed. Grease fittings are at 45 degrees and countersunk into casting to prevent damage. All bearings have ductile housings, and have machined mounting surfaces.

Anson
Industrial Mfg. Corporation

7392 Progress Place
Delta, British Columbia, CANADA, V4G 1A1
Tel: [604] 952-4055 1- 800 663 7723
Fax: [604] 952-4058
Email: info@ansonindustrial.com
website: www.ansonindustrial.com

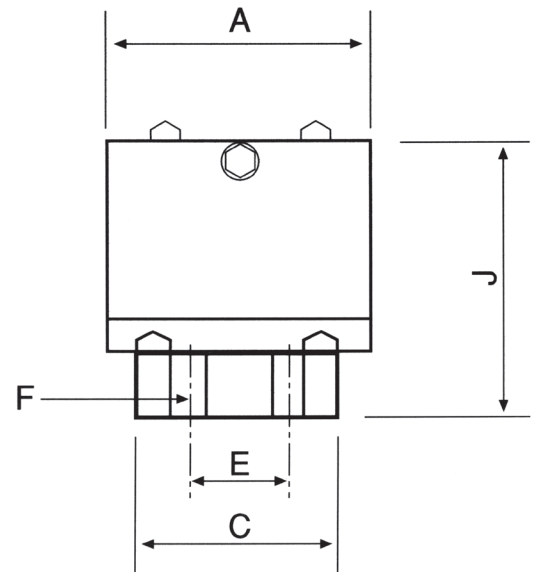
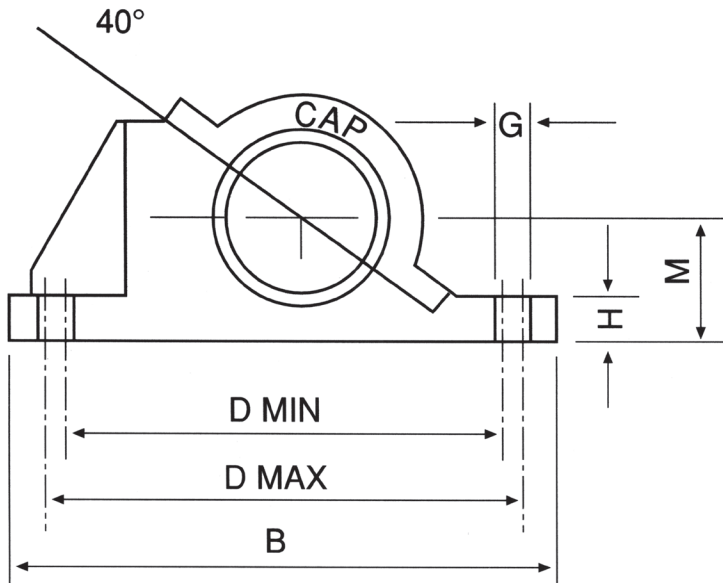
ANSON 5500 SERIES ANGLE SPLIT



In applications where an angle split bearing must be used Anson has come up with the 5500 series 40° angle split. It features:

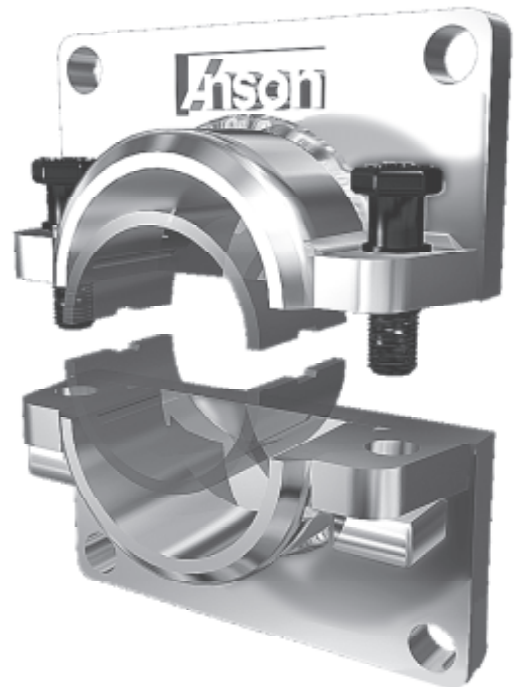
- **100% steel construction.**
- **Anson's unique roll out shell design. Designed for not only simple but also economical replacement.**
- **Roll out replacement liners are available in babbitt, urethane, zinc aluminum or bronze with the same easy installation as the 2500 series.**

5500 SERIES ANGLE SPLIT



SHAFT SIZE	PART NO.	A	B	C	D		E	F BOLT DIA.	G	H	J	M
					MIN.	MAX.						
3 ⁷ / ₁₆	B55-307	7	13	5	10 ¹ / ₁₆	10 ¹⁵ / ₁₆	2 ³ / ₄	³ / ₄	1 ¹ / ₄	1 ¹ / ₂	7 ¹ / ₈	3 ¹ / ₂
3 ¹⁵ / ₁₆	B55-315	8	14 ³ / ₄	5 ¹ / ₂	11 ⁷ / ₁₆	12 ⁹ / ₁₆	3	³ / ₄	1 ³ / ₈	1 ⁵ / ₈	7 ¹ / ₂	3 ³ / ₄
4 ⁷ / ₁₆	B55-407	9	16 ¹ / ₂	6 ¹ / ₄	12 ¹⁵ / ₁₆	14 ¹ / ₁₆	3 ¹ / ₂	⁷ / ₈	1 ¹ / ₂	1 ³ / ₄	8 ¹ / ₂	4 ¹ / ₈
4 ¹⁵ / ₁₆	B55-415	10	18	7	14 ⁵ / ₁₆	15 ¹¹ / ₁₆	4	⁷ / ₈	1 ⁵ / ₈	1 ⁷ / ₈	9 ³ / ₁₆	4 ¹ / ₂
5 ⁷ / ₁₆	B55-507	11	19 ³ / ₄	8	15 ¹ / ₁₆	16 ⁷ / ₁₆	4 ¹ / ₂	1	1 ⁷ / ₈	2	10 ¹ / ₄	5
5 ¹⁵ / ₁₆		12	20 ¹ / ₂	8 ¹ / ₂	15 ¹³ / ₁₆	17 ³ / ₁₆	5	1 ¹ / ₈	1 ⁷ / ₈	2 ¹ / ₈	11 ¹ / ₁₆	5 ¹ / ₂
6 ¹ / ₂		13	22	9 ¹ / ₂	17 ³ / ₁₆	18 ¹³ / ₁₆	5 ¹ / ₂	1 ¹ / ₈	2	2 ¹ / ₄	12 ¹ / ₈	6
7		14	23	10	18 ⁵ / ₁₆	19 ¹¹ / ₁₆	6	1 ¹ / ₄	2	2 ³ / ₈	13	6 ¹ / ₂
8		16	26	10	20 ¹¹ / ₁₆	22 ⁵ / ₁₆	6 ³ / ₄	1 ³ / ₈	2 ¹ / ₄	2 ¹ / ₂	14 ¹ / ₁₆	7
9		16	29	10 ¹ / ₂	22	24	6	1 ¹ / ₂	2 ³ / ₄	2 ³ / ₄	14 ⁷ / ₈	8

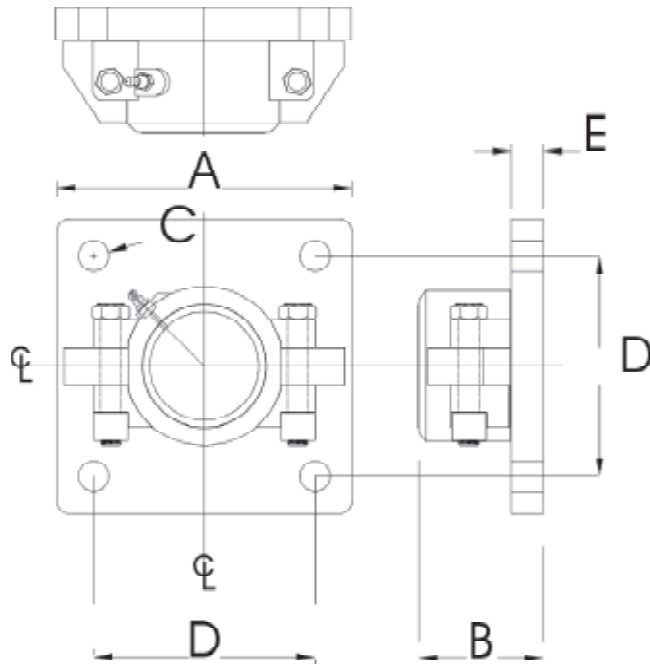
7700 FLANGE BEARINGS



Features:

- Heavy duty 100% steel 2 piece construction.
- Ideal for side mount applications that are slow turning and heavily loaded.
- Same unique feature of 2500 series.
- Roll out replacement liners are available in babbitt, urethane, zinc aluminum or bronze with the same easy installation as the 2500 series.

ANSON 7700 SERIES FLANGE BEARINGS



- All fabricated steel construction
- Easy change bearing shells
- Shell Materials:
Urethane, Babbitt, Zinc Aluminum, Bronze

Dimensions in Inches

MODEL #	SHAFT DIA	A	B	C	D	E	BOLT DIA
B77-115	1 ¹⁵ / ₁₆	7	2 ³ / ₄	¹¹ / ₁₆	5	⁷ / ₈	⁵ / ₈
B77-207	2 ⁷ / ₁₆	8	3 ³ / ₈	¹³ / ₁₆	6	⁷ / ₈	³ / ₄
B77-215	2 ¹⁵ / ₁₆	8	3 ³ / ₈	¹³ / ₁₆	6	⁷ / ₈	³ / ₄
B77-307	3 ⁷ / ₁₆	10	3 ⁷ / ₈	¹⁵ / ₁₆	8	⁷ / ₈	⁷ / ₈
B77-315	3 ¹⁵ / ₁₆	10	3 ⁷ / ₈	¹⁵ / ₁₆	8	⁷ / ₈	⁷ / ₈
B77-407	4 ⁷ / ₁₆	14	5	1 ¹ / ₁₆	12	1 ¹ / ₄	1
B77-415	4 ¹⁵ / ₁₆	14	5	1 ¹ / ₁₆	12	1 ¹ / ₄	1

Dimensions in Millimeters

MODEL #	SHAFT DIA	A	B	C	D	E	BOLT DIA
B77-115	52	178	70	18	127	22	M16
B77-207	62	203	86	21	152	22	M20
B77-215	75	203	86	21	152	22	M20
B77-307	87	254	98	24	216	22	M22
B77-315	100	254	98	24	216	22	M22
B77-407	112	355.6	127	27	304.8	31.75	M24
B77-415	125	355.6	127	27	304.8	31.75	M24

PLEASE CALL FOR SIZES NOT LISTED

Anson
Industrial Mfg. Corporation

7392 Progress Place
Delta, British Columbia, CANADA, V4G 1A1
Tel: [604] 952-4055 1- 800 663 7723
Fax: [604] 952-4058
Email: info@ansonindustrial.com
website: www.ansonindustrial.com

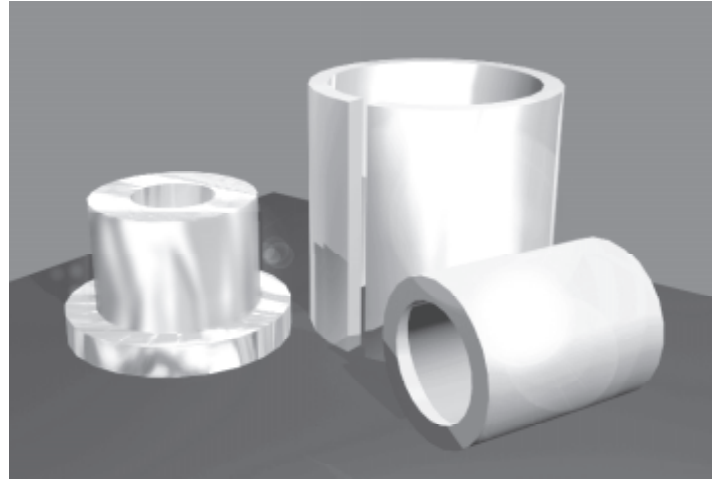
ANSON ZA BUSHING STOCK

Available in hollow or round bar

ZA 12 (ZINC ALUMINUM ALLOY)

THE BEARING MATERIAL OF CHOICE

The Anson 2500 series sleeve bearing is used in mills across North America. Many projects now specify the Anson 2500 series bearing complete with Za bushing rather than bronze. This has resulted in a growing interest in this material as an alternative to bronze.



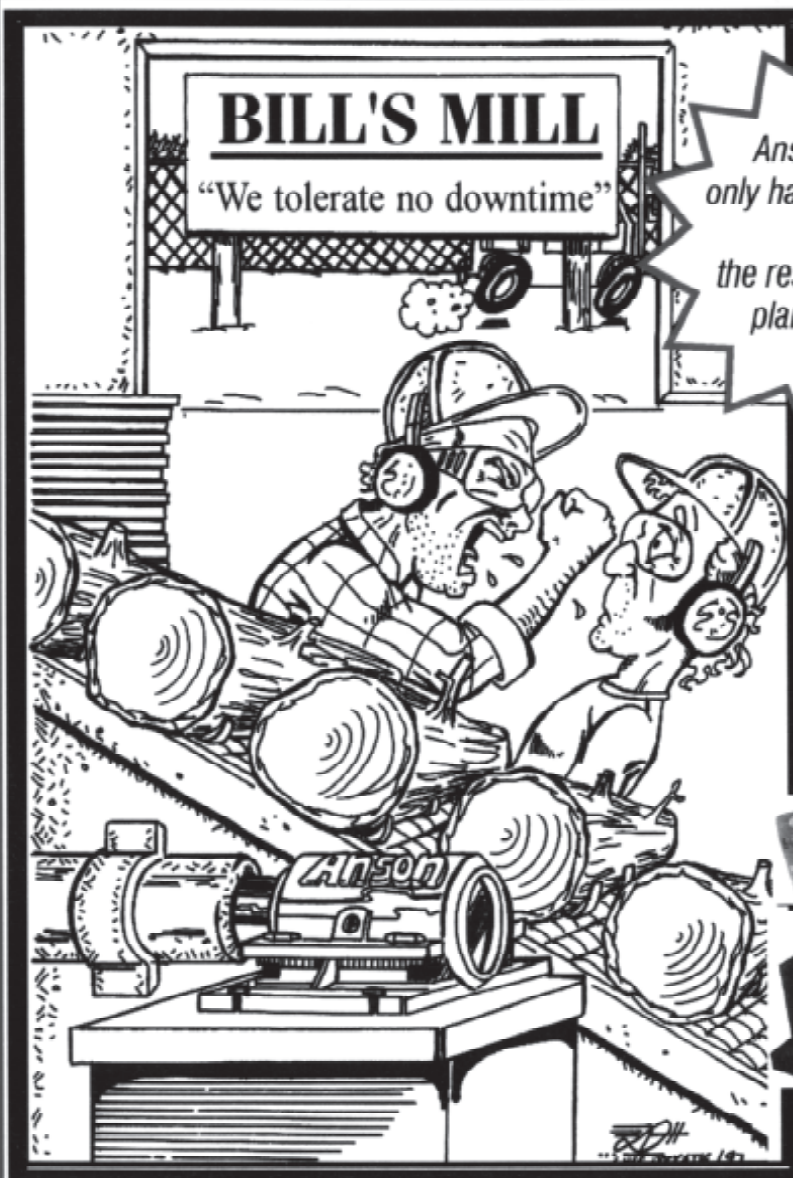
The following are some of the benefits of using Za:

- Za usually wears less than bronze for longer bearing life.
- Za outperforms 660 bronze in wear resistance and anti-friction characteristics by a wide margin (typically 3 to 1).
- Za offers good comprehensive strength and demonstrates higher bearing load capacity than 660 bronze.
- Za is up to 40% lighter than bronze.
- Za castings eliminate the need for costly bronze inserts, required with aluminum castings, by using the casting wall as the bearing race.
- Za alloys have shown superior emergency "dry running" performance and galling resistance compared to leaded tin and aluminum bronze.
- Za has a greater ability to embed dirt particles without causing bearing or shaft wear.
- Za alloys machine rapidly with low tool wear.

The alternative to bronze for bushing and bearing stock.
For more information or price quotation - call Anson at the numbers above.

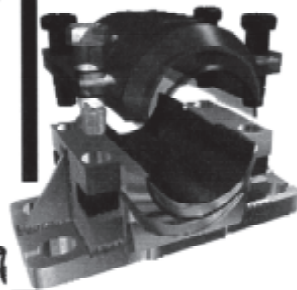
Anson
Industrial Mfg. Corporation

7392 Progress Place
Delta, British Columbia, CANADA, V4G 1A1
Tel: [604] 952-4055 1- 800 663 7723
Fax: [604] 952-4058
Email: info@ansonindustrial.com
website: www.ansonindustrial.com

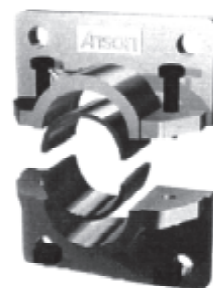


*Anson Bearings
only handle part of the
stress.....
the rest is handled by
plant managers!*

**The Famous
2500 Series
Super Bearings**



**Heavy Duty
Angle Split
Bearings**



**The ORIGINAL and
still the BEST!**

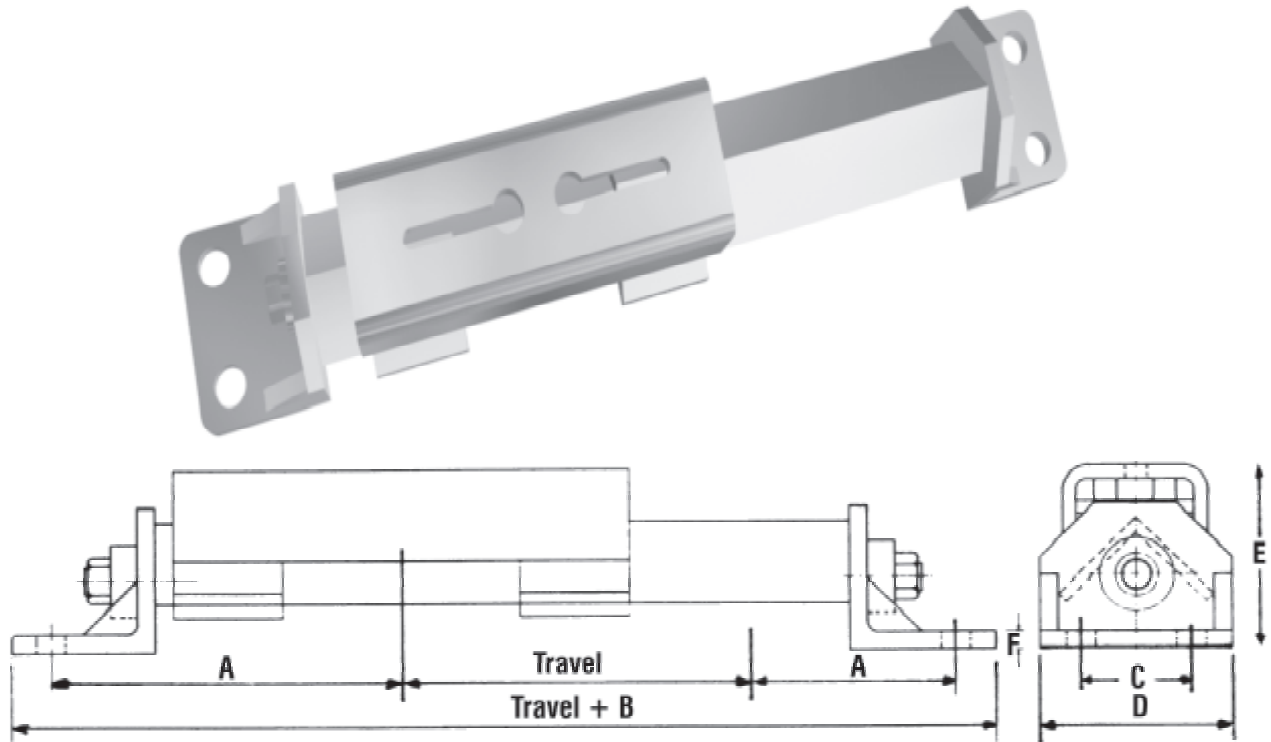
1-800-663-7723

Visit our web site!
On-line Internet Catalogue
www.exmall.com/anson

Anson
Industrial Mfg. Corporation

**Anson Flange Bearings
have the ease of service
features of the 2500!**

ANSON ATU STYLE TAKE-UP FRAME



Dimensions in Inches

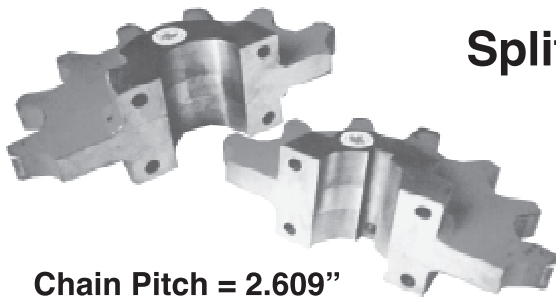
Frame No.	Shaft Size		A	B	C	D	E	F	Bolt Dia.
ATU 115	1 ¹⁵ / ₁₆	2 ³ / ₁₆	8 ⁷ / ₈	20	3	5 ¹ / ₄	3 ³ / ₄	⁵ / ₁₆	⁵ / ₈
ATU 207	2 ⁷ / ₁₆	*	9 ⁷ / ₈	22	3	5 ¹ / ₄	4 ⁷ / ₈	¹ / ₂	³ / ₄
ATU 215	2 ¹⁵ / ₁₆	*	10 ⁵ / ₈	23 ¹ / ₂	3	5 ¹ / ₄	5 ¹ / ₈	¹ / ₂	³ / ₄
ATU 315	3 ⁷ / ₁₆	3 ¹⁵ / ₁₆	13	28 ¹ / ₂	3	5 ³ / ₄	5 ¹ / ₂	¹ / ₂	³ / ₄
ATU 415	4 ⁷ / ₁₆	4 ¹⁵ / ₁₆	16	34 ¹ / ₂	4	7 ¹ / ₂	6 ⁵ / ₈	⁵ / ₈	⁷ / ₈

Dimensions in Millimeters

Frame No.	Shaft Size		A	B	C	D	E	F	Bolt Dia.
ATU 115	50	55	225	508	76	133	95	8	M16
ATU 207	60	*	250	559	76	133	124	13	M20
ATU 215	75	*	270	597	76	133	130	13	M20
ATU 315	85	100	330	724	76	146	140	13	M20
ATU 415	110	125	413	876	102	190	168	16	M22

ALL FABRICATED STEEL CONSTRUCTION, CADMIUM PLATED SCREW. WHEN ORDERING, STATE MAKE & STYLE OF BEARING, TWO or FOUR HOLE BEARING BASE, AND REQUIRED TRAVEL

ANSON MILL CHAIN SPROCKETS

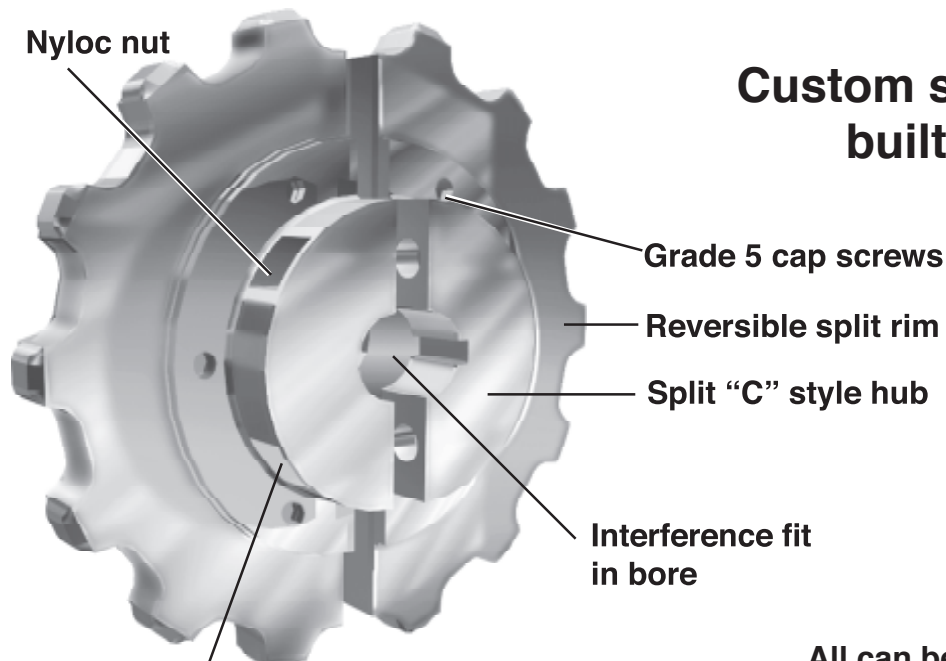


Split steel sprockets

Chain Pitch = 2.609"
Chain Numbers:
H78, W78, 578, 81X, C188
Tooth face at pitch line $\frac{15}{16}$ "



Recessed cut-out for
connecting bolt



Custom steel bearings built to order

Bolt head recessed into hub

90° Split
40° Split

Solid 1000 Series Style

All can be built to your specifications
with our unique roll out shell feature

Notes

Don't Forget !



No need to get bogged down with lengthy installations, short bearing life, poor liner design, or long maintenance downtime!

1-800-663-7723

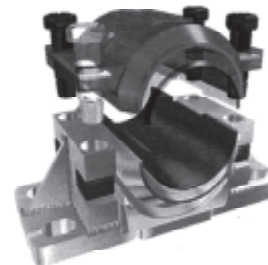
Visit our web site!
On-line Internet Catalogue
www.exmall.com/anson

Anson

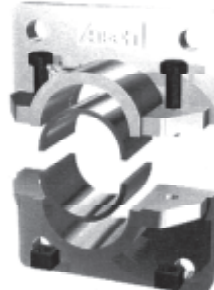
Industrial Mfg. Corporation

7392 Progress Place
Delta, British Columbia, CANADA, V4G 1A1
Tel: [604] 952 4055 Fax: [604] 952 4058

The Famous
2500 Series
Super Bearings



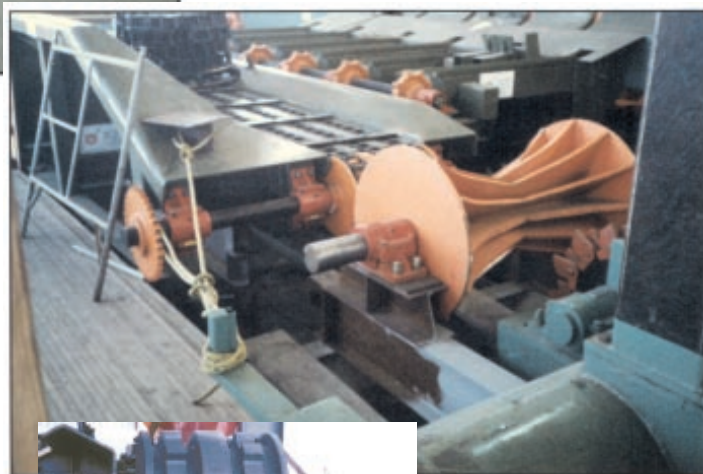
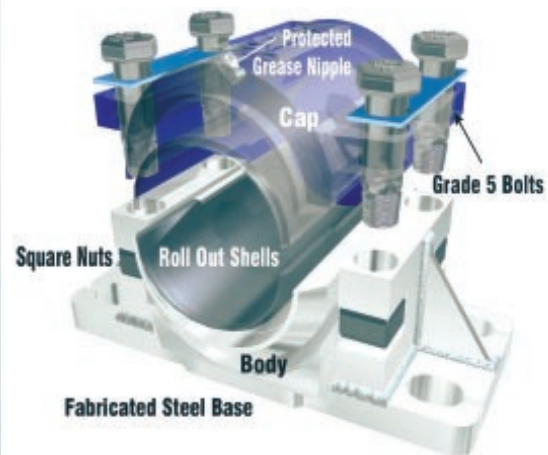
Heavy Duty
Angle Split
Bearings



Anson Flange
Bearings have the
ease of service
features of the
2500!

Sprockets,
Custom Chains,
Take-up Frames





Anson
Industrial Mfg. Corporation



7392 Progress Place
Delta, British Columbia, CANADA, V4G 1A1
Tel: [604] 952-4055 1- 800 663 7723
Fax: [604] 952-4058
Email: info@ansonindustrial.com
website: www.ansonindustrial.com